

MRV

DC INVERTER

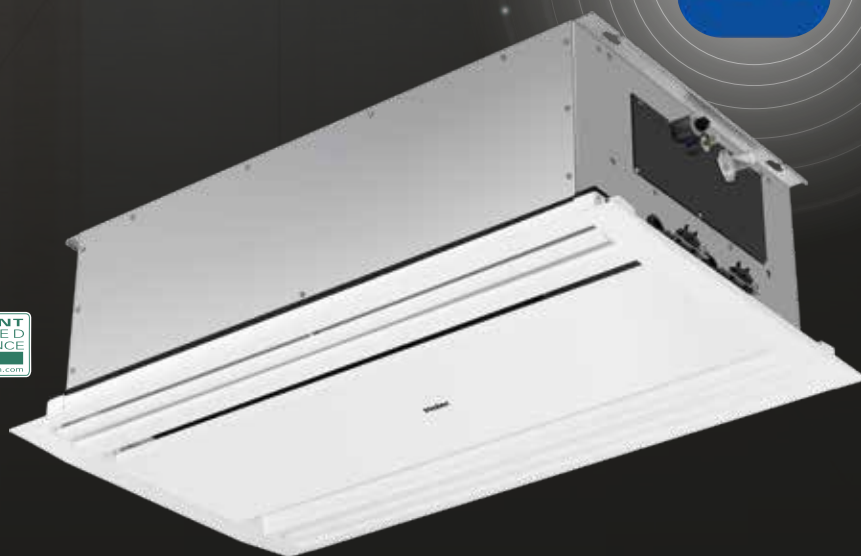


CASSETTE

2 VIAS

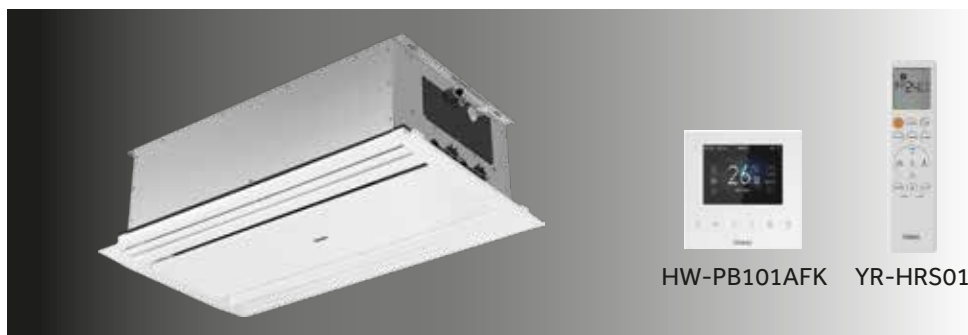
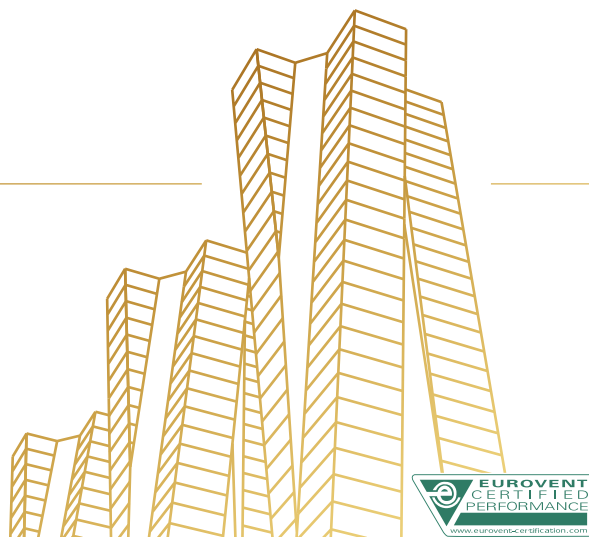
Wi-Fi
App Haier AC

Haier
Air Conditioning



MRV

DC INVERTER

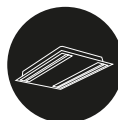


HW-PB101AFK YR-HRS01

- 7.2 kW
- 9.2 kW
- 12.2 kW
- 16.2 kW
- 18.2 kW



Bomba de drenagem de elevação incorporada, máximo 700 mm



Design anti-incrustante exclusivo para teto



Motor de ventilador DC



Capacidade até 14 kW

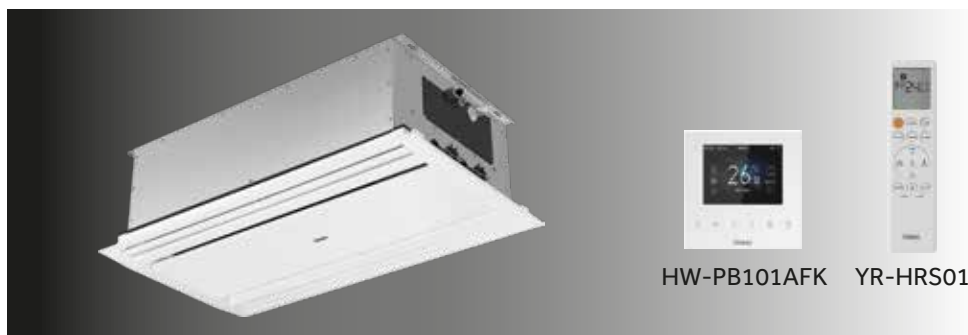
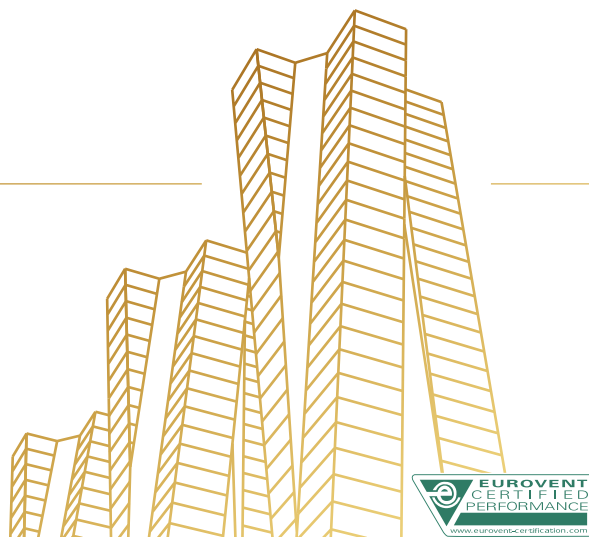
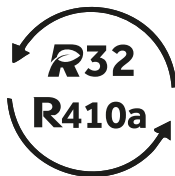


Wi-Fi
App Haier AC

Dados Técnicos		Und	AB072MBFRA	AB092MBFRA	AB122MBFRA	AB162MBFRA	AB182MBFRA
Capacidade	Arrefecimento	kBtu/h	7.5	9.6	12.3	15.4	19.1
		kW	2.2	2.8	3.6	4.5	5.6
	Aquecimento	kBtu/h	8.5	10.9	13.7	17.1	21.5
		kW	2.5	3.2	4	5	6.3
Parâmetros Eléctricos	Alimentação Eléctrica	Ph/V/Hz	1/220~240/50/60	1/220~240/50/60	1/220~240/50/60	1/220~240/50/60	1/220~240/50/60
Performance	Fluxo de Ar (SH/H-H-M/M-M-L/L/B)	m³/h	665/615/580/550/480/430/390	715/670/635/600/520/470/410	745/680/650/600/535/495/430	815/710/680/650/590/510/450	970/850/805/780/680/605/500
	Nível de Pressão Sonora (SH/H-H-M/M-M-L/L/B)	dB (A)	32/31/30/30/29/29/28	34/33/32/31/30/30/29	35/33/32/32/31/31/30	37/35/34/32/32/31/30	39/37/37/36/34/32/31
Instalação	Dimensões (W/D/H)	mm	1000/600/290	1000/600/290	1000/600/290	1000/600/290	1000/600/290
	Dimensões Embalagem (W/D/H)	mm	1201/680/377	1201/680/377	1201/680/377	1201/680/377	1201/680/377
	Peso Líquido/Peso Bruto	kg	33/40	33/40	33/40	34/41	34/41
	Diâmetro Tubagem - Líq.	mm	6.35	6.35	6.35	6.35	6.35
	Diâmetro Tubagem - Gás	mm	9.52	9.52	12.7	12.7	12.7
	Drainage Pipe Dimension	mm	DN25	DN25	DN25	DN25	DN25
Painel	Modelo	/	P2B-1160IB	P2B-1160IB	P2B-1160IB	P2B-1160IB	P2B-1160IB
	Dimensões (W/D/H)	mm	1160/665/60	1160/665/60	1160/665/60	1160/665/60	1160/665/60
	Dimensões Embalagem (W/D/H)	mm	1244/748/159	1244/748/159	1244/748/159	1244/748/159	1244/748/159
	Peso Líquido/Peso Bruto	kg	6.3/12	6.3/12	6.3/12	6.3/12	6.3/12
Controlador	Sem fios (Opcional)	/	HW-PB101AFK	HW-PB101AFK	HW-PB101AFK	HW-PB101AFK	HW-PB101AFK
	Infravermelho (Opcional)	/	YR-HQS01	YR-HQS01	YR-HQS01	YR-HQS01	YR-HQS01

MRV

DC INVERTER

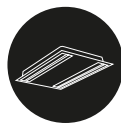


HW-PB101AFK YR-HRS01

- 7.2 kW
- 9.2 kW
- 12.2 kW
- 16.2 kW
- 18.2 kW



Bomba de drenagem de elevação incorporada, máximo 700 mm



Design anti-incrustante exclusivo para teto



Motor de ventilador DC



Capacidade até 14 kW



Wi-Fi
App Haier AC

Dados Técnicos		Und	AB242MBFRA	AB282MBFRA	AB302MBFRA	AB382MBFRA	AB482MBFRA
Capacidade	Arrefecimento	kBtu/h	24.2	27.3	30.7	38.2	47.8
		kW	7.1	8	9	11.2	14
	Aquecimento	kBtu/h	27.3	30.7	34.1	42.7	54.6
		kW	8	9	10	12.5	16
Parâmetros Eléctricos	Alimentação Eléctrica	Ph/V/Hz	1/220~240/50/60	1/220~240/50/60	1/220~240/50/60	1/220~240/50/60	1/220~240/50/60
Performance	Fluxo de Ar (SH/H-H-M/M-M-L/L/B)	m ³ /h	1020/930/850/805/785/730/700	1145/1040/1000/950/900/850/800	1540/1430/1390/1350/1290/1220/1110	1745/1610/1540/1450/1380/1305/1200	1995/1860/1800/1750/1600/1470/1350
	Nível de Pressão Sonora (SH/H-H-M/M-M-L/L/B)	dB (A)	40/39/38/37/36/35/35	41/40/40/39/38/37/36	42/41/40/39/38/37/36	44/43/42/41/40/38/36	46/45/44/44/42/41/38
Instalação	Dimensões (W/D/H)	mm	1000/600/290	1400/600/290	1400/600/290	1400/600/290	1400/600/290
	Dimensões Embalagem (W/D/H)	mm	1201/680/377	1601/680/377	1601/680/377	1601/680/377	1601/680/377
	Peso Líquido/Peso Bruto	kg	34/41	45/54	45/54	45/54	45/54
	Diâmetro Tubagem - Líq.	mm	9.52	9.52	9.52	9.52	9.52
	Diâmetro Tubagem - Gás	mm	15.88	15.88	15.88	15.88	15.88
	Drainage Pipe Dimension	mm	DN25	DN25	DN25	DN25	DN25
Painel	Modelo	/	P2B-1160IB	P2B-1560IB	P2B-1560IB	P2B-1560IB	P2B-1560IB
	Dimensões (W/D/H)	mm	1160/665/60	1560/665/60	1560/665/60	1560/665/60	1560/665/60
	Dimensões Embalagem (W/D/H)	mm	1244/748/159	1644/748/159	1644/748/159	1644/748/159	1644/748/159
	Peso Líquido/Peso Bruto	kg	6.3/12	8/14.5	8/14.5	8/14.5	8/14.5
Controlador	Sem fios (Opcional)	/	HW-PB101AFK	HW-PB101AFK	HW-PB101AFK	HW-PB101AFK	HW-PB101AFK
	Infravermelho (Opcional)	/	YR-HQS01	YR-HQS01	YR-HQS01	YR-HQS01	YR-HQS01